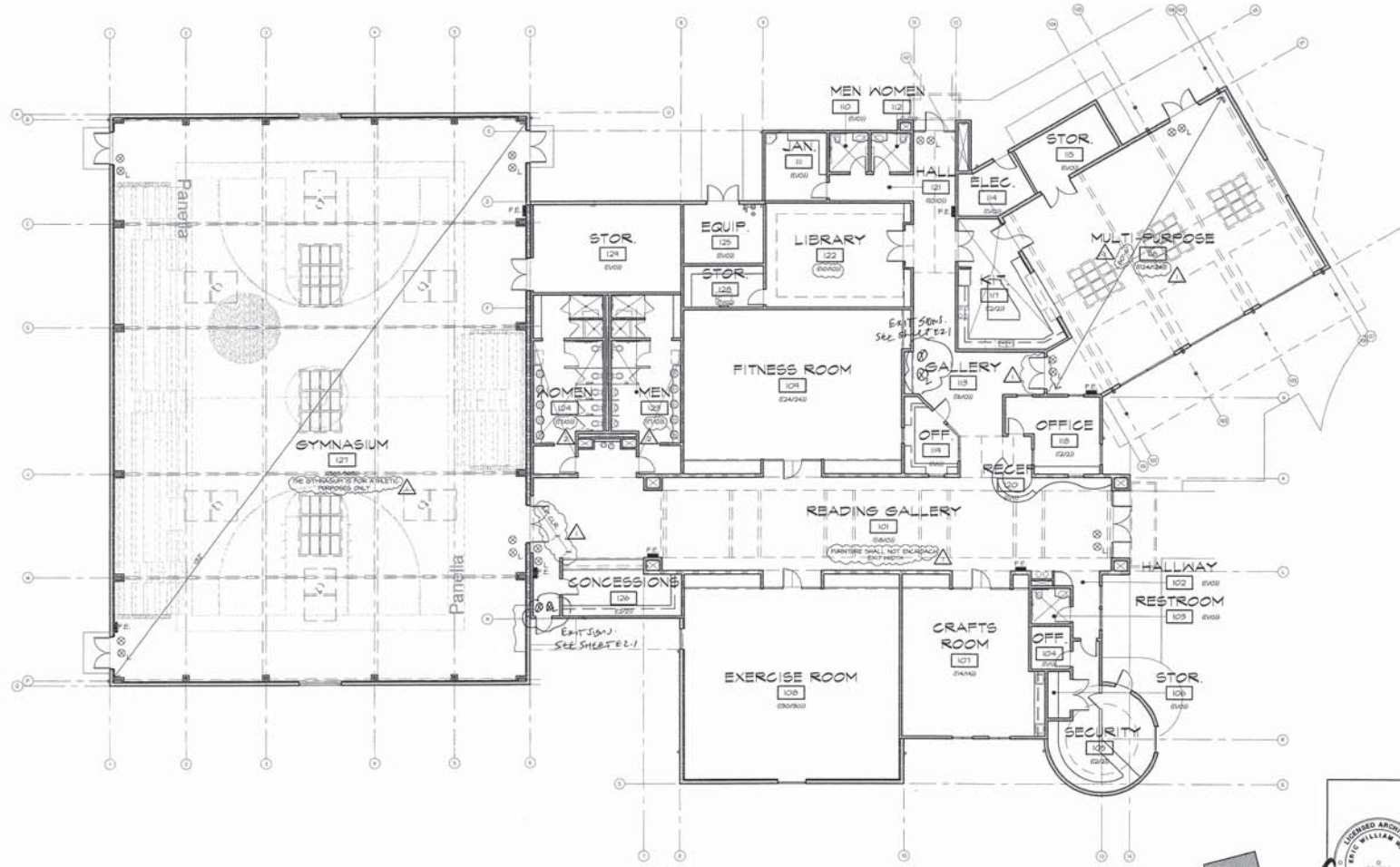


Arnold Rue Community Center



LEGEND

- (XXXXXX) ROOM OCCUPANT LOAD / CONTRIBUTING OCC. LOAD TO EXIT SCHEME
- FE FIRE EXTINGUISHER IN RECESSED HALL CABINET - REFER TO DETAIL VARIOUS
- ⊕ BATTERY BACK-UP ILLUMINATED EXIT SIGN @ T-0' TO CENTER A.F.P. - REFER TO LIGHTING PLAN.
- ⊙ BATTERY BACK-UP LOW LEVEL ILLUMINATED EXIT SIGN - REFER TO LIGHTING PLAN.

- GENERAL NOTES**
- FURNISH AND INSTALL ROOM CAPACITY SIGNAGE. AT ALL ASSEMBLY ROOMS, SIGN SHALL BE OF DURABLE CONSTRUCTION AND CONTRASTING IN COLOR FROM THE BACKGROUND ONTO WHICH IT IS ATTACHED. SIGN SHALL READ "MAXIMUM ROOM CAPACITY SIGN". REFER TO NOTED ROOM OCCUPANT LOAD (THIS DRAWING) FOR CAPACITY VALUES TO BE NOTED ON SIGNAGE.
 - FIRE EXTINGUISHER LOCATIONS SHALL BE APPROVED BY THE FIRE DEPARTMENT PRIOR TO INSTALLATION.
 - TOTAL OCCUPANT LOAD: (620) (620)
 - OCCUPANT LOAD CONTRIBUTING TO EXIT SCHEME: (18) (18)

EXIT PLAN

SCALE: 1" = 10'-0"



Lesovsky Donaldson Architects, LLP
 MEMBER AMERICAN INSTITUTE OF ARCHITECTS
 4 South Central Express Street, St. CA 95204 TEL 209 943-0405 FAX 209 943-0413

These documents are the property of Lesovsky/Donaldson Architects, and are not to be produced, changed or copied without the expressed written consent of Lesovsky/Donaldson Architects.

PANELLA-COMMUNITY CENTER
 EXIT PLAN
 DEPARTMENT OF PARKS & RECREATION
 CITY OF STOCKTON

REV. NO.	DESCRIPTION	DATE	BY	APPROV.
1	PLAN CHECK	10.01.01	CL	
2	PLAN CHECK	10.16.01	GL	

SCALE: 1" = 10'-0"
 DESIGNED BY: CL
 DRAWN BY: CL
 CHECKED BY: EW
 RECORD DWG: 16.01.2007

PROJECT NO. XX-XX-XX